

Cohesity IT Analytics for Compliance

Ensure SLA Adherence and Audit Readiness with Real-Time Reporting and Policy Validation

With growing regulatory pressure and increasing scrutiny over data protection practices, demonstrating compliance has become a critical and complex task. As data continues to sprawl across hybrid environments, organizations face challenges in ensuring consistent retention policies, backup coverage, and adherence to regulatory standards like GDPR, HIPAA, and SOX. Traditional audit preparation is slow, manual, and reactive putting organizations at risk of violations and costly remediation efforts and also raises these questions -

- Can we reliably demonstrate compliance and operational readiness for audits and cyber insurance?
- Were backups completed successfully and did they meet compliance requirements?

Cohesity IT Analytics automates SLA validation and retention reporting, ensuring continuous compliance with internal policies and external regulations while providing audit-ready evidence at scale.

Overview

Cohesity IT Analytics helps organizations streamline compliance across hybrid and multicloud environments by providing real-time visibility into backup coverage, retention, and SLA adherence. The platform offers out-of-the-box compliance dashboards and automated reporting, making it easy to generate audit-ready reports for internal teams and external regulators. With policy validation tools, retention tracking, and granular role-based access, ITA ensures that your data protection efforts always align with industry regulations and organizational policies. By enabling proactive governance, ITA ensures that your organization is always prepared for audits and in compliance with relevant data protection mandates.

Key Benefits

- **Disk Usage and Performance:** View and analyze the performance of your drives by tracking average job write speed. The report shows disk usage and total gigabytes written to the disk.
- **Drive Performance Summary:** Identify drives that are underperforming. View the number of backup jobs and quantity of data written to the drive.
- **Client Usage:** Load balance efficiently by identifying which clients are the most heavily used, based on the number of backup jobs and gigabytes.
- **Backup Appliances:** Plan and predict capacity and utilization from the backup software and the appliance perspective. IT Analytics offers comprehensive reporting on appliances such as Dell/EMC Data Domain and NetBackup Appliances.

1. Identify when the appliance may run out of space, using powerful reports to provide forecasting and trending of appliance capacity usage over time.
2. Leverage performance monitoring and reporting of the appliance speed, an audit trail for history, trending, and asset management, to make appliance management easy and intuitive.

- **Audit Reporting** - Generate exportable, audit-ready reports for internal teams or external regulators, ensuring regulatory alignment with standards like HIPAA, GDPR, and SOX.
- **Backup Compliance Dashboards** - Monitor backup coverage, SLA adherence, retention policy enforcement, and coverage gaps across all environments, including on-premises, cloud, and hybrid platforms.
- **Unprotected & Suspect Data Alerts** - Identify alerts for workloads missing from backup policies or flagged as incomplete, ensuring data protection coverage is always comprehensive.
- **Retention Validation** - Verify that your data meets organizational or industry-specific retention requirements, such as HIPAA, SOX, and GDPR, ensuring that data is retained for the required duration.
- **Alta Copilot for Compliance** - Use natural language queries to easily summarize policy violations, audit gaps, or compliance scores, simplifying the process of identifying non-compliance issues.

Why It Matters

As cyber insurance, industry regulations, and executive oversight continue to evolve, compliance has shifted from being a one-time checkmark to a continuous process. ITA provides a real-time, trusted source of truth to validate protection, ensure adherence to retention policies, and prove recoverability. By automating compliance reporting and enforcing policies, ITA reduces audit risk, strengthens regulatory alignment, and builds trust with internal and external stakeholders. It also shifts compliance

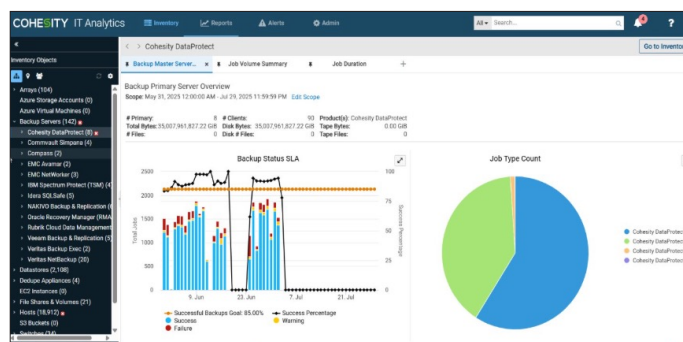


Fig. 1: Backup status dashboard

management from a reactive, manual process to a proactive, data-driven one that integrates seamlessly into daily IT operations.

Deployment Flexibility

Cohesity IT Analytics offers flexible deployment options to suit the needs of any organization:

- **ITA-as-a-Service (ITaaS)**: A cloud-delivered, fully managed solution that ensures the platform is always up-to-date, with no infrastructure overhead.
- **Self-Managed ITA**: An on-premises deployment option for organizations with strict data sovereignty, security, or control requirements.

Both deployment models include:

- **Alta Copilot AI Assistant**: An intelligent assistant for compliance-specific insights and natural language queries.
- **Customizable SLA & Policy Reports**: Tailor reports to meet specific compliance requirements, with the ability to export them for audits.
- **Real-Time Alerts & Anomaly Detection**: Receive proactive notifications of potential compliance gaps or policy violations to stay ahead of potential issues.
- **Broad Platform Support**: ITA integrates with leading data protection solutions such as Cohesity, NetBackup, Commvault, Veeam, and more, providing comprehensive coverage across your data estate.

Conclusion

Cohesity IT Analytics turns compliance from a manual, error-prone process into a streamlined, automated workflow. By embedding governance into day-to-day IT operations, ITA ensures that organizations are always audit-ready and continuously aligned with regulatory data protection mandates. With real-time reporting, automated policy enforcement, and proactive alerts, Cohesity IT Analytics gives IT and compliance teams the tools to manage compliance at scale, reduce audit risks, and ensure data protection is always in line with industry standards.

Visit [Cohesity](https://cohesity.com) to learn more.

© 2025 Cohesity, Inc. All rights reserved.

Cohesity, the Cohesity logo, SnapTree, SpanFS, DataPlatform, DataProtect, Helios, and other Cohesity marks are trademarks or registered trademarks of Cohesity, Inc. in the US and/or internationally. Other company and product names may be trademarks of the respective companies with which they are associated. This material (a) is intended to provide you information about Cohesity and our business and products; (b) was believed to be true and accurate at the time it was written, but is subject to change without notice; and (c) is provided on an "AS IS" basis. Cohesity disclaims all express or implied conditions, representations, warranties of any kind.

COHESITY

cohesity.com

1-855-926-4374

2625 Augustine Drive, Santa Clara, CA 95054

3000178-001-EN 8-2025